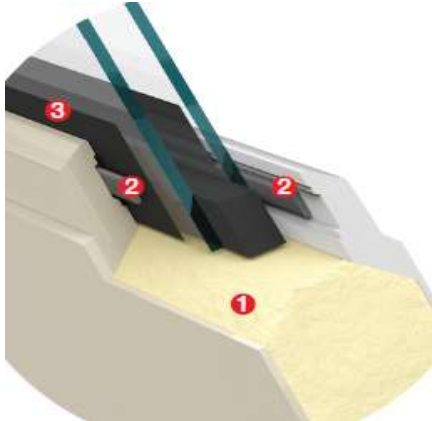




# Flush Glazed Door Systems *Builder Benefits*



Traditional Lip-Lite  
Shown in Smooth-Star.



4 Flush-Glazed Glass  
Shown in Smooth-Star.

Up to 16% wider  
daylight opening



5

- 1 Polyurethane foam that surrounds the glass and provides durability and performance.
- 2 Dual seal to the glass provides high performance protection inside and out.
- 3 Black tape to provide a clean site line and prevent finish weep between the door and glass. This eliminates the need to mask or tape
- 4 16% more visible glass on average per opening versus lip lite
- 5 Seamless clean lines that eliminate the need for a lite frame with door lite plugs, no paint lines, no lite kit movement
- 6 Gold Standard Warranty Coverage that you have come to expect from Therma Tru.

### Flush-Glazed Fiberglass Door Replacement Warranty Rider

*Providing the builder protection against accidental glass breakage on the jobsite during construction.*

### For a Limited Time\*

*Purchase a Therma Tru Flush Glazed door system at the same price as a comparable Therma Tru lip lite system.  
An average savings of \$50 per door system!\*\**



\*Orders must be placed on or before December 15, 2017

\*\*Compared to conventional lip lite frames.  
Note: See Your Therma-Tru dealer or visit [www.thermatru.com](http://www.thermatru.com) for details on limited warranties and exclusions, and ENERGY STAR qualified products.

\*\*Where comparable Therma Tru lip lite door system is available. Exclusions apply.  
See your WBS Sales Associate for more details

